

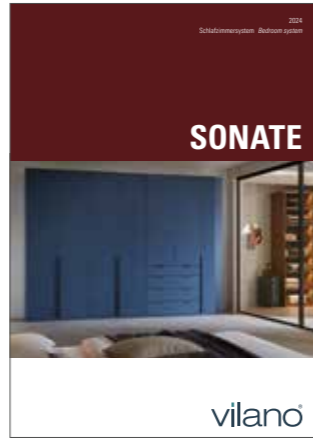
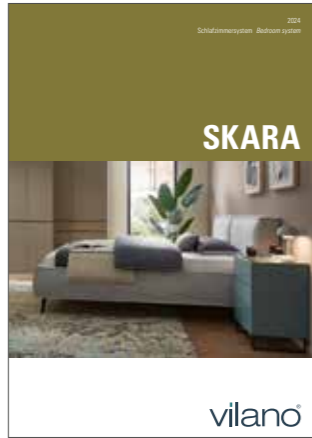
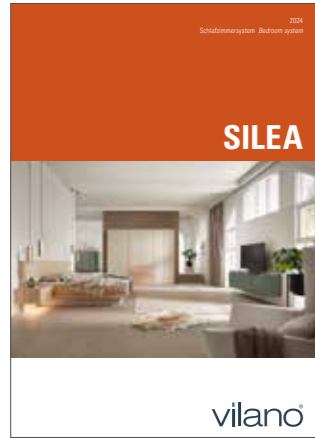
2024











Schlafzimmersystem *Bedroom system*

SILEA



vilano®



Planungsbeispiele <i>Planning examples</i>	4–49
	4–7
	8–11
	12–15
	16–23
	24–27
	28–33
	34–37
	38–39
	40–43
	44–49
Material, Oberfläche & Farbe <i>Materials, finish & colour</i>	50–56
Griffe <i>Handles</i>	51
Stoff- und Lederkollektionen <i>Upholstery collections</i>	52
Interior – Komfort und Ausstattung <i>Interior – Comfort and features</i>	53
Schlafzimmersystem <i>Bedroom system</i>	54–55

Legende *Legend*

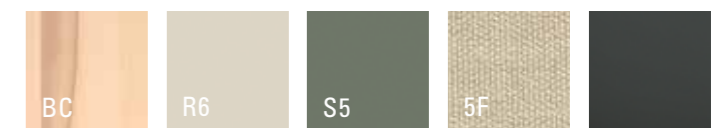
Breite <i>Width</i>		Stoff <i>Fabric</i>	
Höhe <i>Height</i>		Leder <i>Leather</i>	
Tiefe <i>Depth</i>		Griff <i>Handle</i>	
Lack matt <i>Lacquer matt</i>		Klarglas <i>Clear glass</i>	
Lack hochglänzend <i>High-gloss lacquer</i>		Satiniertes Glas <i>Frosted glass</i>	
Holz <i>Wood</i>			





4-7

- 67047 **Bettanlage *Bedstead***
 ↕ 309,8 cm ↕ 101,1 cm ↕ 49,2/213,3 cm
 BC – Kristallbuche *Beech crystal*
 R6 – Lack Seidengrau *Silk grey lacquer*
 5F – Stoff *Fabric Ocean cream*
- 67048 **Kleiderschrank *Wardrobe***
 ↕ 288,2 cm ↕ 234,9 cm ↕ 62,0 cm
 BC – Kristallbuche *Beech crystal*
 R6 – Lack Seidengrau *Silk grey lacquer*
 R6 – Lack Seidengrau HG *Silk grey lacquer HG*
 ↕ Push to open
- 67046 **Hängesideboard *Hanging sideboard***
 ↕ 183,2 cm ↕ 47,2 cm ↕ 39,6 cm
 S5 – Lack Piniengrün *Pine green lacquer*
 ↕ Push to open







8-11

- 69948 Kleiderschrank *Wardrobe*
 ↳ 288,2 cm ↳ 234,9 cm ↳ 62,0 cm
 OB – Asteiche Bourbon *Knotty oak bourbon*
 S1 – Lack Macchiata *Macchiata lacquer*
 Push to open
 H8 – Schwarz matt *Black matt*
- 69959 Highboard *Highboard*
 ↳ 183,2 cm ↳ 120,5 cm ↳ 49,2 cm
 S2 – Lack Marill *Marill lacquer*
 Push to open
- 69599 Betтанlage *Bedstead*
 ↳ 309,8 cm ↳ 120,0 cm ↳ 49,2/221,3 cm
 OB – Asteiche Bourbon *Knotty oak bourbon*
 S1 – Lack Macchiata *Macchiata lacquer*
 4L – Velours *Velours Cloud coffee*
 Push to open

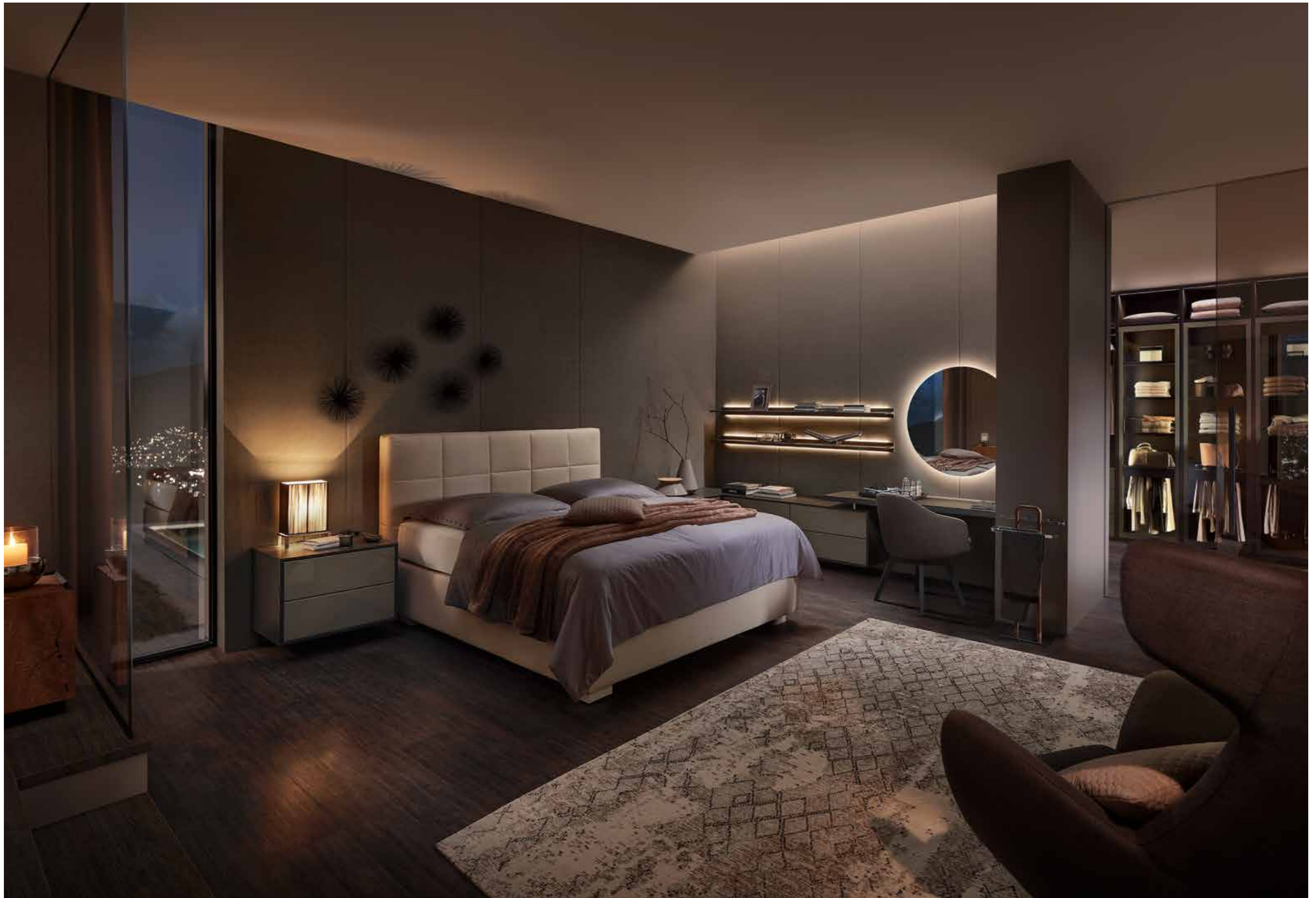


OB

S1






S2

4L





12-15

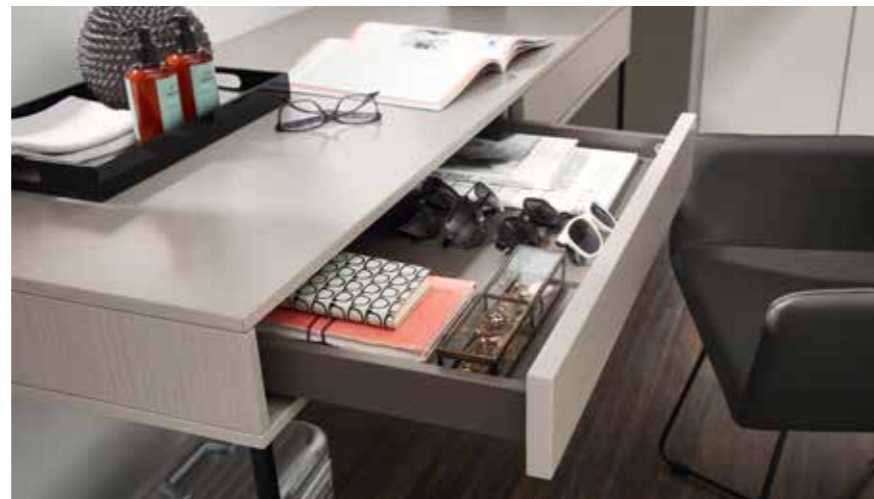
- 69732 Eckhängelösung mit Schminkplatz
Corner hanging cabinet solution with dressing table
 ↳ 63,2/142,4 × 347,2 cm ↳ 277,5 cm ↳ 46,2/56,0 cm
 P6 – Lack Taupe HG *Taupe lacquer HG* 
 P6 – Lack Taupe *Taupe lacquer* 
 AN – Eiche Graphit *Oak graphite* 
 ↳ Push to open
- 93562 Stuhl R4 mit Armlehne *Chair R4 with armrest*
 ↳ 58,0 cm ↳ 82,2 cm ↳ 62,6 cm
 AN – Eiche Graphit *Graphite oak* 
 5H – Stoff *Fabric Ocean Coal* 











16-17

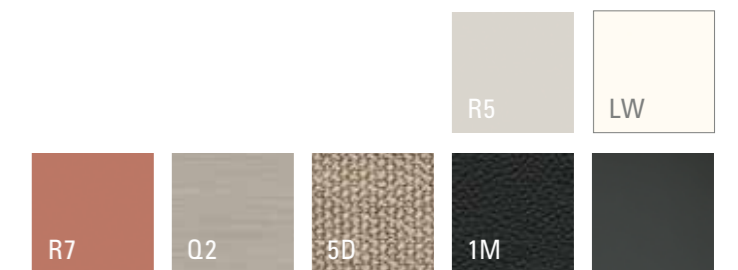
- freie Kleiderschrank *Wardrobe*
 Planung \rightarrow 318,2 cm \rightarrow 260,0 cm \rightarrow 62,0 cm
 R5 – Lack Brillantgrau *Diamond grey lacquer* \diamond
 \rightarrow Push to open *Push to open*
- 2x 69726 Korpuselement mit Füßen *Carcass element with feet*
 \rightarrow 78,2 cm \rightarrow 206,9 cm \rightarrow 39,6 cm
 R8 – Lack Oxidrot *Oxide red lacquer* \diamond
 \rightarrow Push to open *Push to open*
- 69725 Bettanlage mit Füßen *Bedstead with feet*
 \rightarrow 312,6 cm \rightarrow 110,1 cm \rightarrow 43,3 cm/207,0 cm
 R5 – Lack Brillantgrau *Diamond grey lacquer* \diamond
 Q2 – Feinschliff Bianco *Fine sanded Bianco* ■
 5D – Stoff *Fabric Ocean Taupe* ■
 \rightarrow Push to open *Push to open*

18-19

- freie Kleiderschrank *Wardrobe*
 Planung \rightarrow 180,0 cm \rightarrow 252,0 cm \rightarrow 62,0 cm
 R5 – Lack Brillantgrau *Diamond grey lacquer* \diamond
 \rightarrow H8 – Schwarz matt *Black matt*
- 83279 Funktionstisch *Functional table*
 \rightarrow 153,2 cm \rightarrow 77,5 cm \rightarrow 60,0 cm
 Q2 – Feinschliff Bianco *Fine sanded Bianco* ■
 \rightarrow Push to open *Push to open*
- 93808 Stuhl R5 mit Kreuzgestell *Chair R5 with criss-cross base*
 \rightarrow 59,0 cm \rightarrow 88,0 cm \rightarrow 56,5 cm
 Schwarz matt *Black matt* ■
 1M – Leder *Leather Hermes Nero* ■
- 31015H Hängespiegelpaneel *Hanging mirror paneel*
 \rightarrow 45,0 cm \rightarrow 196,8 cm \rightarrow 4,4 cm
 R5 – Lack Brillantgrau *Diamond grey lacquer* \diamond
- 2x 69727 Korpuselement mit Füßen *Carcass element with feet*
 \rightarrow 63,2 cm \rightarrow 155,7 cm \rightarrow 39,6 cm
 R7 – Lack Rosewood *Lacquer rosewood* \diamond
 \rightarrow Push to open *Push to open*

20-21

- freie Kleiderschrank mit TV-Element *Wardrobe with TV element*
 Planung \rightarrow 288,2 cm \rightarrow 234,9 cm \rightarrow 39,6 cm
 LW – Lack Weiß HG *White lacquer HG* ■
 LW – Lack Weiß *White lacquer* \diamond
 Q2 – Feinschliff Bianco *Fine sanded Bianco*
 \rightarrow Push to open *Push to open*
- 2x 76217 Paneelstollen *Wall panel*
 \rightarrow 15,0 cm \rightarrow 200,2 cm \rightarrow 13,2 cm
 Q2 – Feinschliff Bianco *Fine sanded Bianco*
- freie Sideboard *Sideboard*
 Planung \rightarrow 273,2 cm \rightarrow 94,1 cm \rightarrow 39,6 cm
 LW – Lack Weiß HG *White lacquer HG* ■
 LW – Lack Weiß *White lacquer* \diamond
 \rightarrow Push to open *Push to open*








24-25

69747 Sideboard mit Füßen *Side board with feet*
 ↳ 153,2 cm ↳ 85,3 cm ↳ 39,6 cm
 R8 – Lack Oxidrot HG *Oxide red lacquer HG* 
 ↳ Push to open *Push to open*
 ↳ U2 – Weiß matt *White matt*

69748 Kleiderschrank *Wardrobe*
 ↳ 315,0 cm ↳ 260,0 cm ↳ 62,0 cm
 LW – Lack Weiß *White lacquer* 
 ↳ Push to open *Push to open*
 ↳ U2 – Weiß matt *White matt*

69746 Betтанlage mit Füßen *Bedstead with feet*
 ↳ 312,6 cm ↳ 110,1 cm ↳ 43,3/207,0 cm
 LW – Lack Weiß *White lacquer* 
 Q3 – Feinschliff Grigio *Fine sanded Grigio* 
 1M – Leder *Leather Hermes anthracite* 
 ↳ Push to open *Push to open*

26

83274 Funktionstisch *Functional table*
 ↳ 123,2 cm ↳ 77,5 cm ↳ 30,0 cm
 R8 – Lack Oxidrot *Diamond grey lacquer* 
 ↳ Push to open *Push to open*

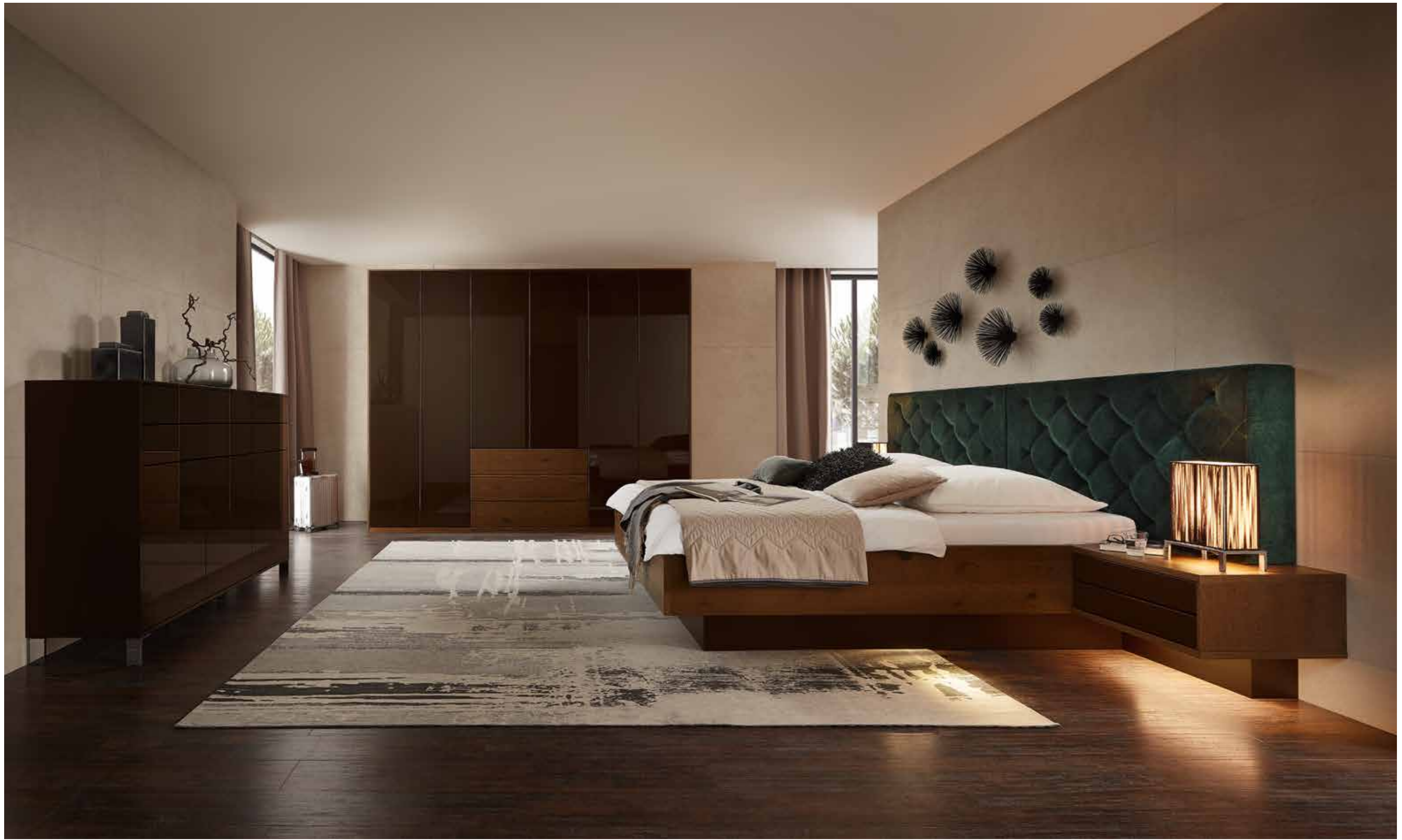
LW



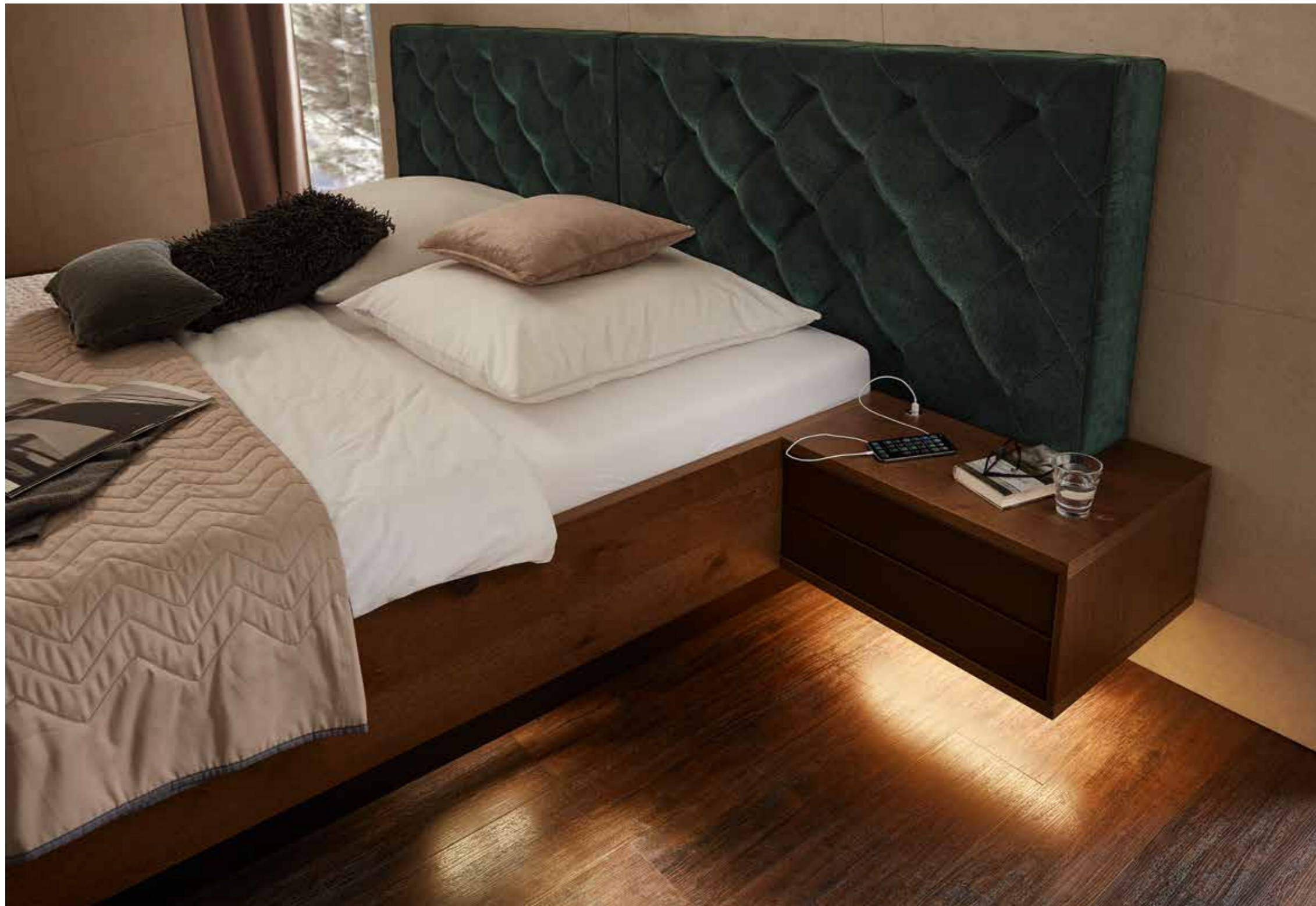
R8

Q3

1M

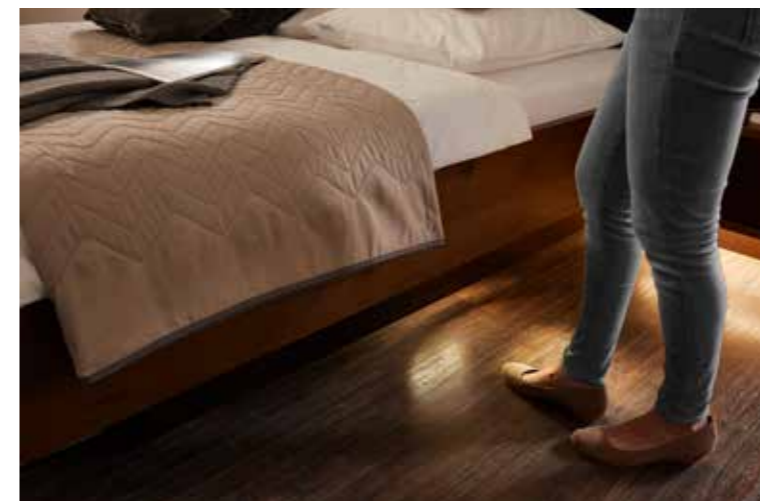


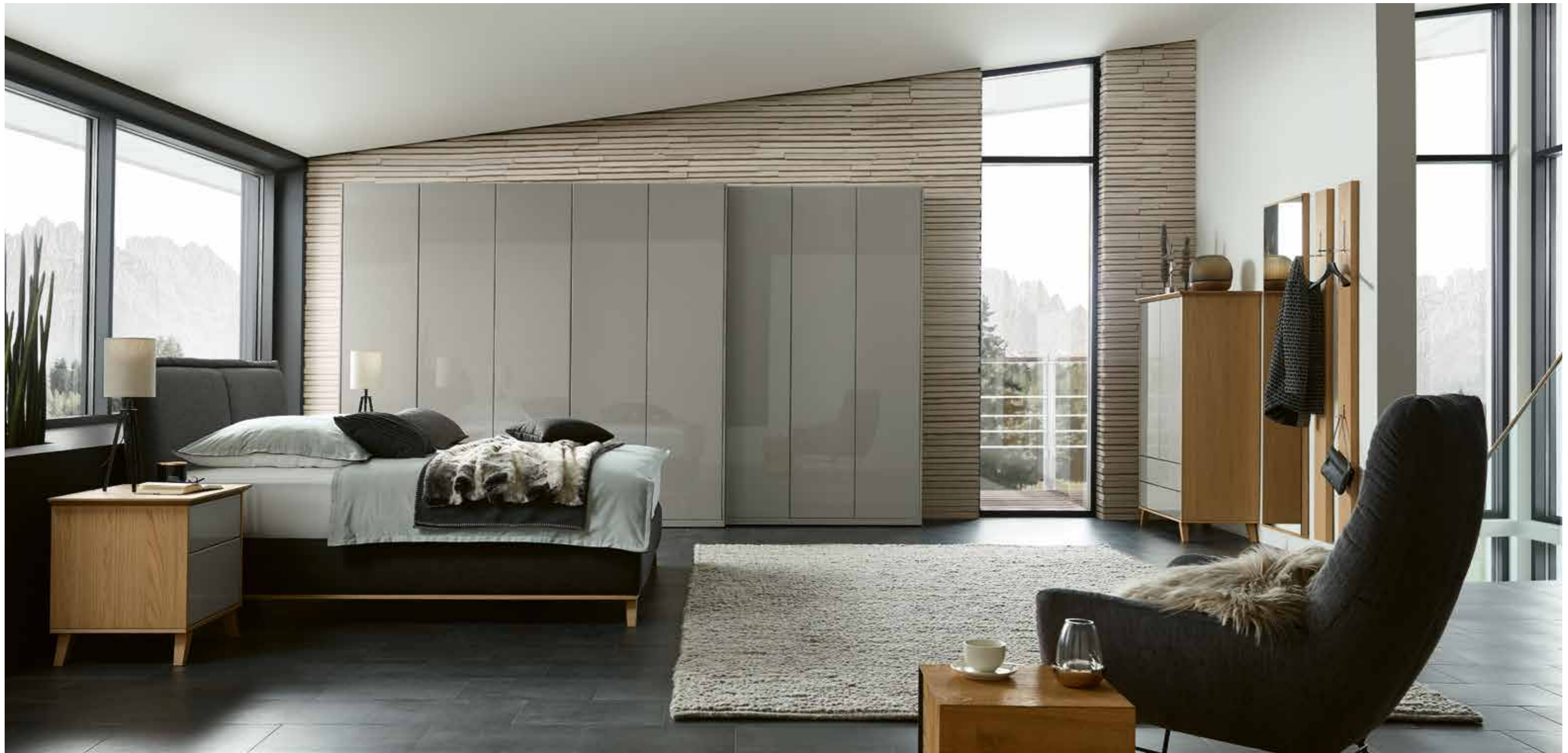




28-33

- 69046 Highboard *Highboard*
 ↳ 183,2 cm ↳ 120,5 cm ↳ 49,2 cm
 R2 – Lack Espresso HG *Espresso lacquer HG* 
 ↳ Push to open *Push to open*
- 69129 Kleiderschrank *Wardrobe*
 ↳ 288,2 cm ↳ 234,9 cm ↳ 62,0 cm
 R2 – Lack Espresso HG *Espresso lacquer HG* 
 OB – Asteiche Bourbon *Knotty oak bourbon* 
 ↳ Push to open *Push to open*
- 69599 Betтанlage *Bedstead*
 ↳ 288,2 cm ↳ 234,9 cm ↳ 62,0 cm
 R2 – Lack Espresso HG *Espresso lacquer HG* 
 OB – Asteiche Bourbon *Knotty oak bourbon* 
 4G – Velours *Velours Cloud bottle* 
 ↳ Push to open *Push to open*







34-37

- 78860 Nachtkonsole *Bedside table*
 ↳ 61,7 cm ↳ 60,2 cm ↳ 51,9 cm
 ES – Eiche Sand *Sand oak*
 LY – Lack Grau HG *Grey lacquer HG*
 ↳ Push to open *Push to open*
 ↳ H8 – Schwarz matt *Black matt*
- 68871 Kleiderschrank *Wardrobe*
 ↳ 402,3 cm ↳ 233,3 cm ↳ 62 cm
 LY – Lack Grau HG *Grey lacquer HG*
 ↳ Push to open *Push to open*
 ↳ H8 – Schwarz matt *Black matt*
- 76678 Korpuselement *Carcass element*
 ↳ 93,2 cm ↳ 155,7 cm ↳ 49,2 cm
 ES – Eiche Sand *Sand oak*
 LY – Lack Grau HG *Grey lacquer HG*
 ↳ Push to open *Push to open*
 ↳ H8 – Schwarz matt *Black matt*
- 76217 Wandspiegel *Wall mirror*
 ↳ 60,0 cm ↳ 196,8 cm ↳ 4,4 cm
 ES – Eiche Sand *Sand oak*
- 76217 Garderobenpaneel *Hallway panel*
 ↳ 15,0 cm ↳ 193,6 cm ↳ 13,2 cm
 ES – Eiche Sand *Sand oak*





38-39

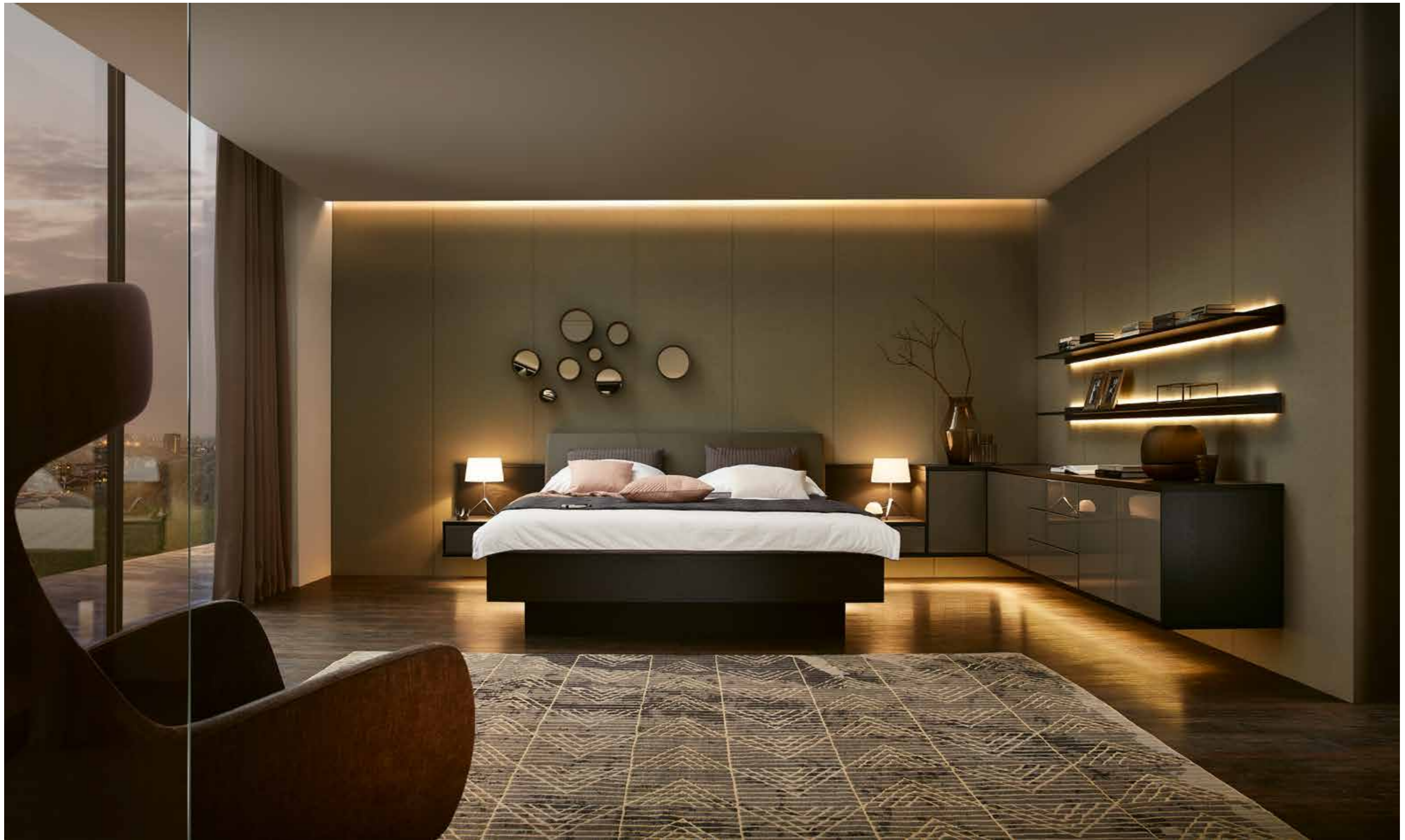
68889G Eckkleiderschrank *Corner wardrobe*
 ↗ 320,3 × 179,5 cm ↘ 250,9 cm ↖ 50,8 cm
 NN – Nussbaum Nova *Walnut nova*
 LG – Lack Graphit HG *Graphite lacquer HG*
 ↵ Push to open *Push to open*



NN

LG





40 – 41

68878/ Eckkleiderschrank *Corner wardrobe*
 68879 ↗ 405,7 x 332,4 cm ↘ 250,9 cm ↙ 50,8 cm
 AN – Eiche Graphit *Oak graphite*
 P6 – Lack Taupe HG *Taupe lacquer HG*
 ↗ Push to open *Push to open*



78784 Regal-Kombination *Shelf combination*
 ↗ 188,7 cm ↘ 148,6 cm ↙ 85,6 cm
 AN – Eiche Graphit *Oak graphite*

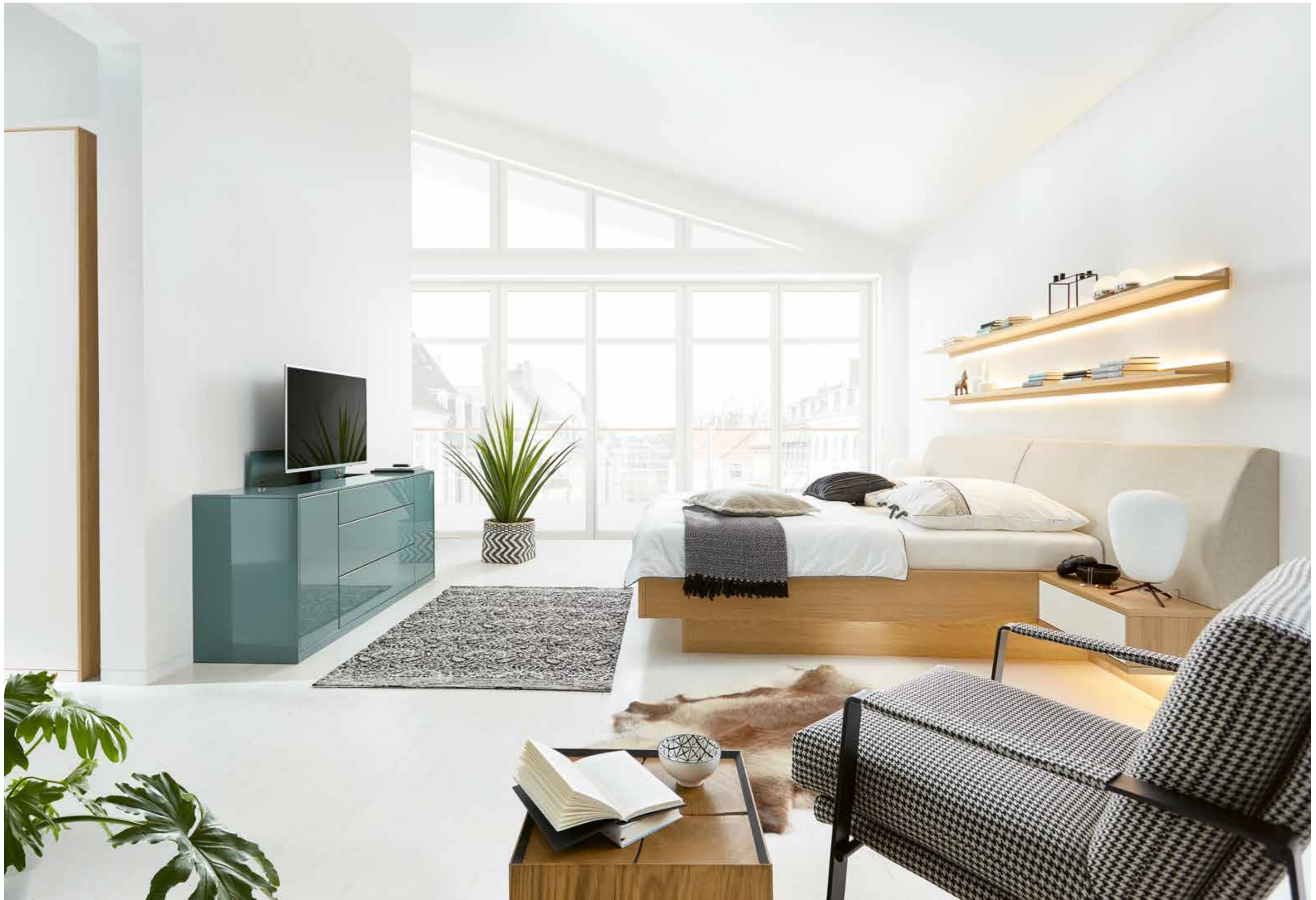


42 – 43

68885/ Bettenlage *Bedstead*
 68877 ↗ 394,9 x 298,3 cm ↘ 149,0 cm ↙ 49,2/223,3 cm
 AN – Eiche Graphit *Oak graphite*
 P6 – Lack Taupe HG *Taupe lacquer HG*
 1T – Leder *Leather Hermes Smog*
 ↗ Push to open *Push to open*









44 – 45

68880 Kleiderschrank *Wardrobe*
 ↳ 303,2 cm ↳ 234,9 cm ↳ 62,0 cm
 ES – Eiche Sand *Sand oak*
 LW – Lack Weiß *White lacquer*
 ↳ Push to open *Push to open*

68881 Betтанlage *Bedstead*
 ↳ 309,8 cm ↳ 98,3 cm ↳ 49,2/223,3 cm
 ES – Eiche Sand *Sand oak*
 ↳ Push to open *Push to open*

76963 Wandbord *Wall shelf*
 ↳ 270,0 cm ↳ 8,2 cm ↳ 20,6 cm
 ES – Eiche Sand *Sand oak*

46 – 47

68890 Sideboard *Sideboard*
 ↳ 183,2 cm ↳ 76,5 cm ↳ 49,2 cm
 ES – Eiche Sand *Sand oak*
 P8 – Lack Ocean HG *Ocean lacquer HG*
 ↳ Push to open *Push to open*

68881 Betтанlage *Bedstead*
 ↳ 309,8 cm ↳ 98,3 cm ↳ 49,2/223,3 cm
 ES – Eiche Sand *Sand oak*
 ↳ Push to open *Push to open*

76963 Wandbord *Wandbord*
 ↳ 270,0 cm ↳ 8,2 cm ↳ 20,6 cm
 ES – Eiche Sand *Sand oak*

48 – 49

68880 Kleiderschrank *Wardrobe*
 ↳ 303,2 cm ↳ 234,9 cm ↳ 62,0 cm
 ES – Eiche Sand *Sand oak*
 LW – Lack Weiß *White lacquer*
 ↳ Push to open *Push to open*





Front + Korpus Front + Carcass

- | | | | |
|--|---|---|---------------------------------------|
| LW Lack Weiß <i>white lacquer</i> | LC Lack Crema <i>crema lacquer</i> | R6 Lack Seidengrau <i>silk grey l.</i> | S1 Lack Macchiata <i>macchiata l.</i> |
| R4 Lack Cashmere <i>cashmere l.</i> | R3 Lack Olivgrau <i>olive grey l.</i> | R5 L. Brillantgrau <i>diamond grey l.</i> | LY Lack Grau <i>grey lacquer</i> |
| LH Lack Platingrau <i>platinum grey l.</i> | P6 Lack Taupe <i>taupe lacquer</i> | LT Lack Terra <i>terra lacquer</i> | R2 Lack Espresso <i>espresso l.</i> |
| S6 Lack Cognac <i>cognac lacquer</i> | R7 Lack Rosewood <i>rosewood l.</i> | R8 Lack Oxidrot <i>oxide red l.</i> | DR Lack Dark Red <i>dark red l.</i> |
| S2 Lack Marill <i>marill lacquer</i> | S5 L. Piniengrün <i>pine green l.</i> | P9 Lack Agave <i>agave lacquer</i> | P8 Lack Ocean <i>ocean lacquer</i> |
| S4 L. Atlantikblau <i>atlantic blue l.</i> | S3 L. Schiefergrau <i>slate grey l.</i> | LG Lack Graphit <i>graphite lacquer</i> | LS Lack Schwarz <i>black lacquer</i> |

Alle Lacke auch in Hochglanz erhältlich
All finishes are also available in high-gloss type

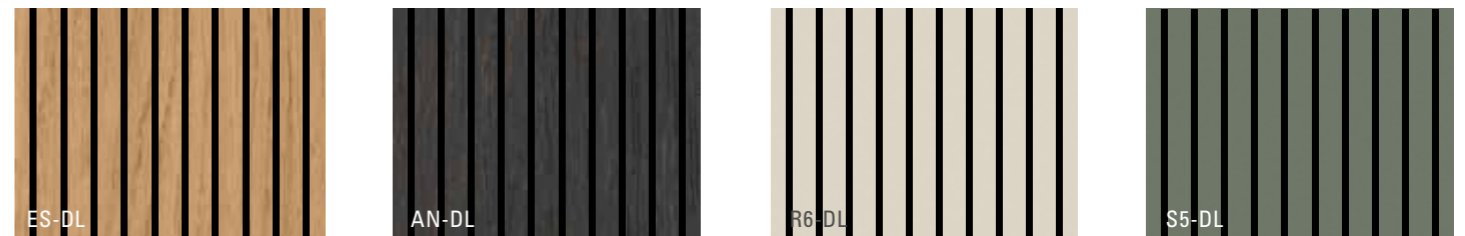


- | | | | |
|---------------------------------------|---|--------------------------------------|-------------------------------------|
| BC Kristallbuche <i>Beech crystal</i> | ES Eiche Sand <i>Sand oak</i> | OA Asteiche <i>Knotty oak</i> | BK Kernbuche <i>Beech heartwood</i> |
| NN Nussbaum Nova <i>Walnut nova</i> | OB Asteiche Bourbon <i>Knotty oak bourbon</i> | AN Eiche Graphit <i>Graphite oak</i> | |

DeeLine

In allen Holz- und Lackausführungen erhältlich. Mögliche Bauteile entnehmen Sie bitte der Preisliste.
Available in all wood and lacquer finishes. Please refer to the price list for possible components.

Beispielausführungen Example designs



Akzentausführung: Feinschliff Accent finishes: Fine sanded



Griffe Handles

Die Griffe sind außerdem in allen 24 Lackfarben erhältlich.
The handles are also available in all 24 lacquer colours.



Leder HERMES Leather HERMES

1A – Bianco	1P – Djerba	1B – Ivory	1S – Betulla	1N – Sand	1G – Mocca	1L – Lever
1K – Choco	1T – Smog	1I – Nero	1H – Bruin	1M – Anthracite	1R – Merlin	1D – Bordo
1C – Red	1U – Cotto	1Q – Yellow	1F – Verde	1E – Oceanblue	1W – Whale	

Vegane Lederalternative PURE Vegan leather alternative PURE

7A – Almond	7B – Camel	7C – Cognac	7D – Reed	7E – Cool Grey	7F – Eukalyptus	7G – Lake
7H – Concrete	7I – Stone	7J – Midnight				

Velours CLOUD Velours CLOUD

4E – Salt	4D – Beige	4K – Toffee	4J – Wood	4I – Steel	4L – Coffee	4B – Stonecrop
4P – Jade	4G – Bottle	4F – Breeze	4Q – Iceblue	4R – Greyblue	4S – Coral	4T – Rust
4A – Ember						

Flachgewebe OCEAN Flat woven fabric OCEAN

5E – Blanc	5F – Cream	5I – Linen	5D – Taupe	5H – Coal	5G – Curry	5P – Peach
5Q – Scarlet	5R – Aquamarin	5S – Denim	5T – Sage	5L – Silver	5J – Iron	5K – Night
5A – Ebony						

Flachgewebe WILLOW Flat woven fabric WILLOW

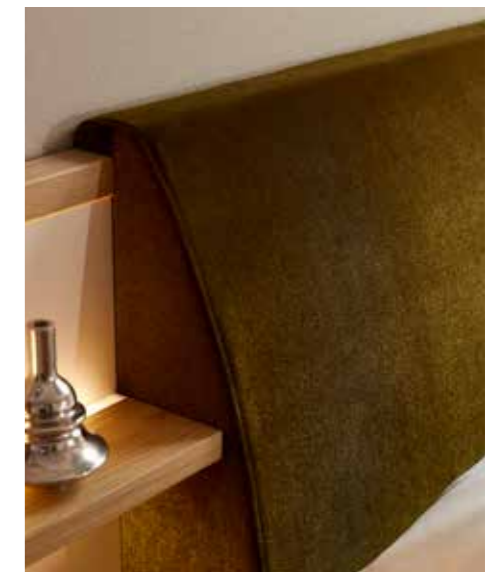
6O – Champagne	6C – Granola	6F – Shadow	6I – Opal	6L – Sapphire	6B – Powder	6A – Bronze
6H – Granite	6E – Green Smoke	6D – Horizon	6G – Merlot	6J – Chestnut	6K – Russet	6N – Forest
6M – Crown Blue						

Interior – Komfort und Ausstattung Interior – Comfort and features



Alle Leuchten enthalten LED-Lampen, die innerhalb der Energieklasse E bis F liegen. Die LED-Lampen können nicht ausgetauscht werden.
Each lamp is equipped with energy class E to F LEDs. The LEDs cannot be replaced.

Das gepolsterte Kopfteil ist sehr hochwertig verarbeitet und lässt sich bis über den Nachtschrank verlängern.
The upholstered back is expertly made, and can be extended to beyond the bedside tables.



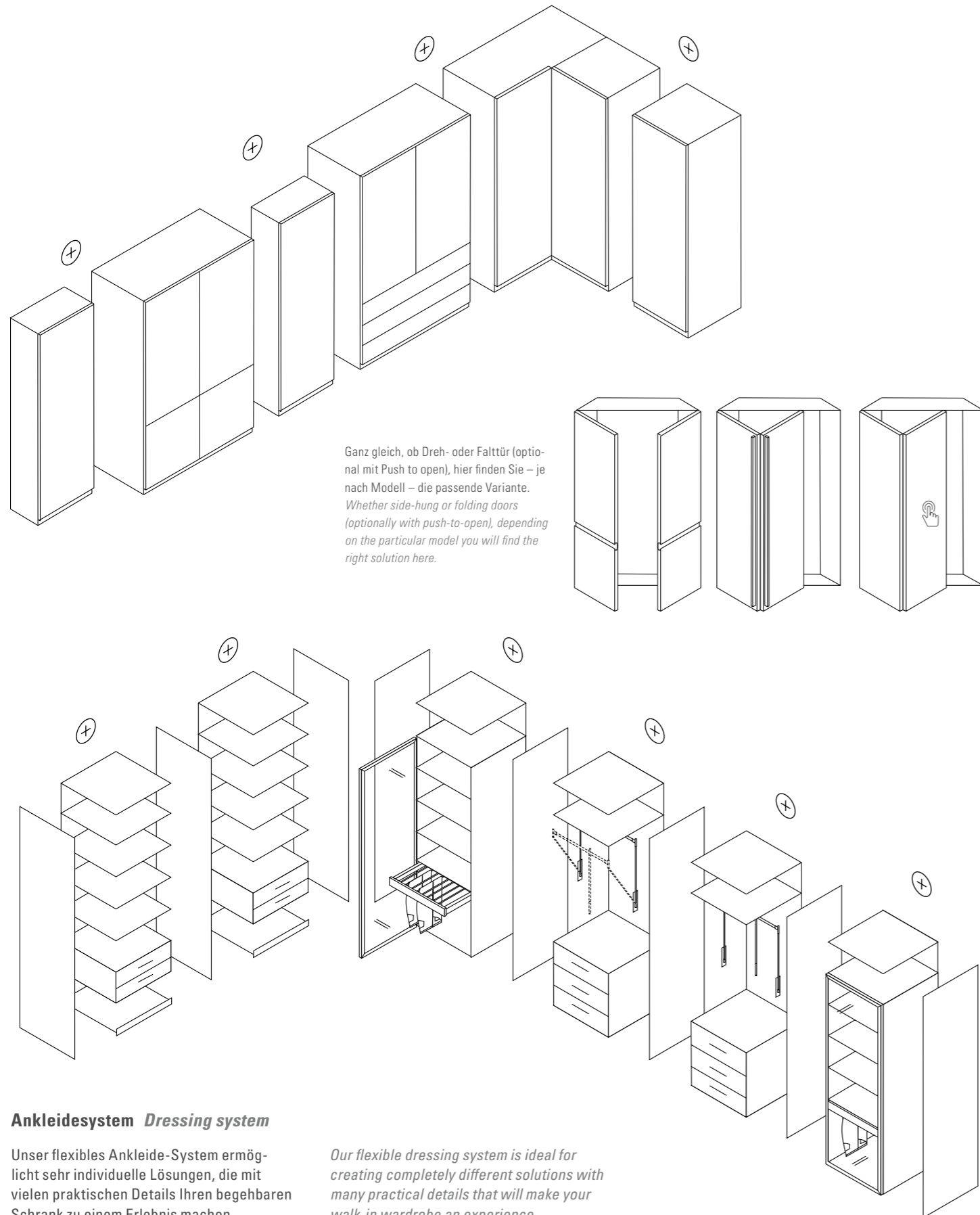
Kopfteile und Stühle: Als Bezugstoff ist eine Fülle an verschiedenen Leder-, Velours- und Stoffausführungen verfügbar.
Headboards and chairs: As cover fabric, there are a wealth of different leather, velours and fabric versions available to choose from.



Kleiderschranksystem Wardrobe system

Die Schrankelemente dienen als Grund- und Anbauelemente, die benötigten Mittel- und Außenseiten werden durch uns automatisch zugeführt (Mittelseite ist 3,7 cm stark). Bitte planen Sie bei Nischeneinbauten zwischen zwei Wänden 2 cm zusätzlich für eine einwandfreie Montage ein.

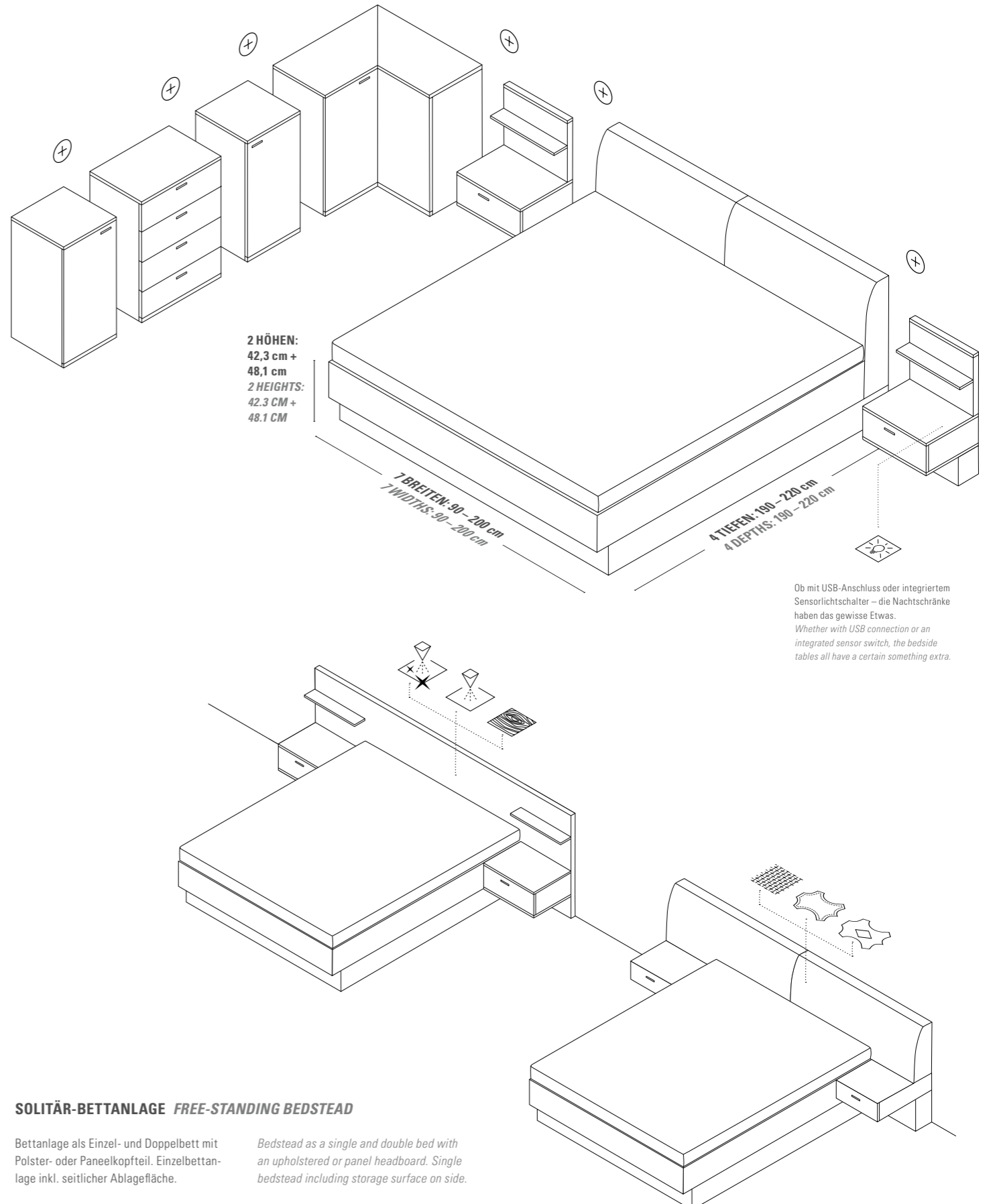
The wardrobe elements act as basic and add-on elements, and we automatically add the required centre panels and outer sides (the centre panel is 3.7 cm thick). With in-fills between two walls, please allow an additional 2 cm in your planning for the ideal installation.



Bettanlage Bedstead

Unsere Bettanlagen sind in verschiedenen Breiten lieferbar und ergänzen das Korpus-System harmonisch und nahtlos. Mit verschiedenen Kopfteilen und Beleuchtungsoptionen passen Sie die Bettanlage an Ihre Vorstellungen perfekt an.

Our bedsteads are available in various widths, and complete the carcass system harmoniously and seamlessly. With various headboards and lighting options to enable you to adjust the bedstead perfectly to your ideas.



EMISSIONSKLASSE für Möbel
Emission class for furniture

Betten / Beds
Hersteller-Nr. / Manufacturer number
H20020106
Kollektion / Collection / Model / Model
Gesamtemission
Prüfnummer / Control number
15-086-10

A
B
C
D

A

Emissionsklasse für Möbel nach der
RAL-Registrierung RAL-RG 437
der Gütergemeinschaft Möbel +
Emission class for furniture
according to RAL-RG 437 +
www.emissionslabel.de

EMISSIONSKLASSE für Möbel
Emission class for furniture

Kastemöbel / Cabinet furniture
Hersteller-Nr. / Manufacturer number
H20020106
Kollektion / Collection / Model / Model
Gesamtemission
Prüfnummer / Control number
15-086-20

A
B
C
D

A

Emissionsklasse für Möbel nach der
RAL-Registrierung RAL-RG 437
der Gütergemeinschaft Möbel +
Emission class for furniture
according to RAL-RG 437 +
www.emissionslabel.de

EMISSIONSKLASSE für Möbel
Emission class for furniture

Sitzmöbel / Seating furniture
Hersteller-Nr. / Manufacturer number
H20020106
Kollektion / Collection / Model / Model
Gesamtemission
Prüfnummer / Control number
15-086-10

A
B
C
D

A

Emissionsklasse für Möbel nach der
RAL-Registrierung RAL-RG 437
der Gütergemeinschaft Möbel +
Emission class for furniture
according to RAL-RG 437 +
www.emissionslabel.de

MADE IN GERMANY
MÖBEL • FURNITURE

Hersteller-Nr. / manufacturer no.
H20020106
Programm / program / Model / model
Körpersmöbel: Tische, Betten,
Garderobe

Zertifiziert durch die DGM
Verband der Deutschen Möbelindustrie e.V.

RAL

RAL
GÜTEZEICHEN

M

MÖBEL
PRODUKT
QUALITÄT

REGISTRIERT